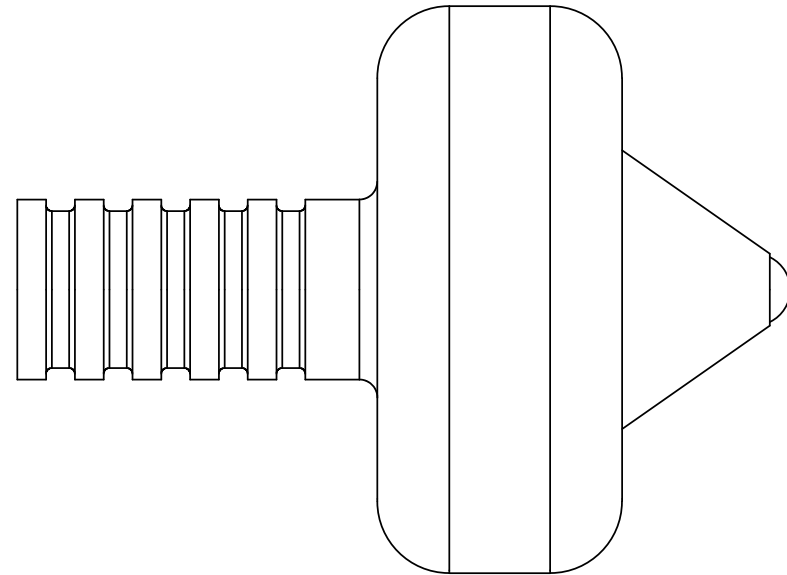
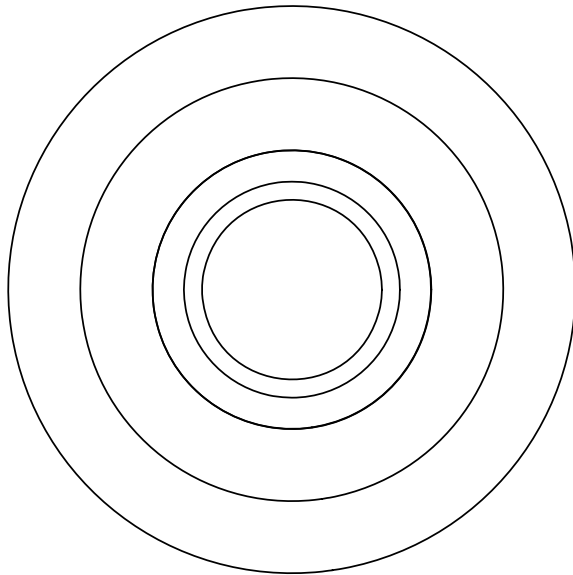


NOTES:  
 1. DIMS IN INCHES  
 2. QTY: 1

TITLE:		Spinning Top Assembly	
DRAWN		DAVID TUYN	
DESIGNED		DAVID TUYN	
SIZE	DWG. NO.	REV	
<b>A</b>	EML2322L-A-000	<b>A</b>	
SCALE: 3:1		SHEET 1 OF 3	

DIMENSION TYPE	PLACES IN DIMENSION		
	0.0	0.00	0.000
LOCATIONAL	±0.050	±0.020	±0.005
ANGULAR	±5	±2	±0.5

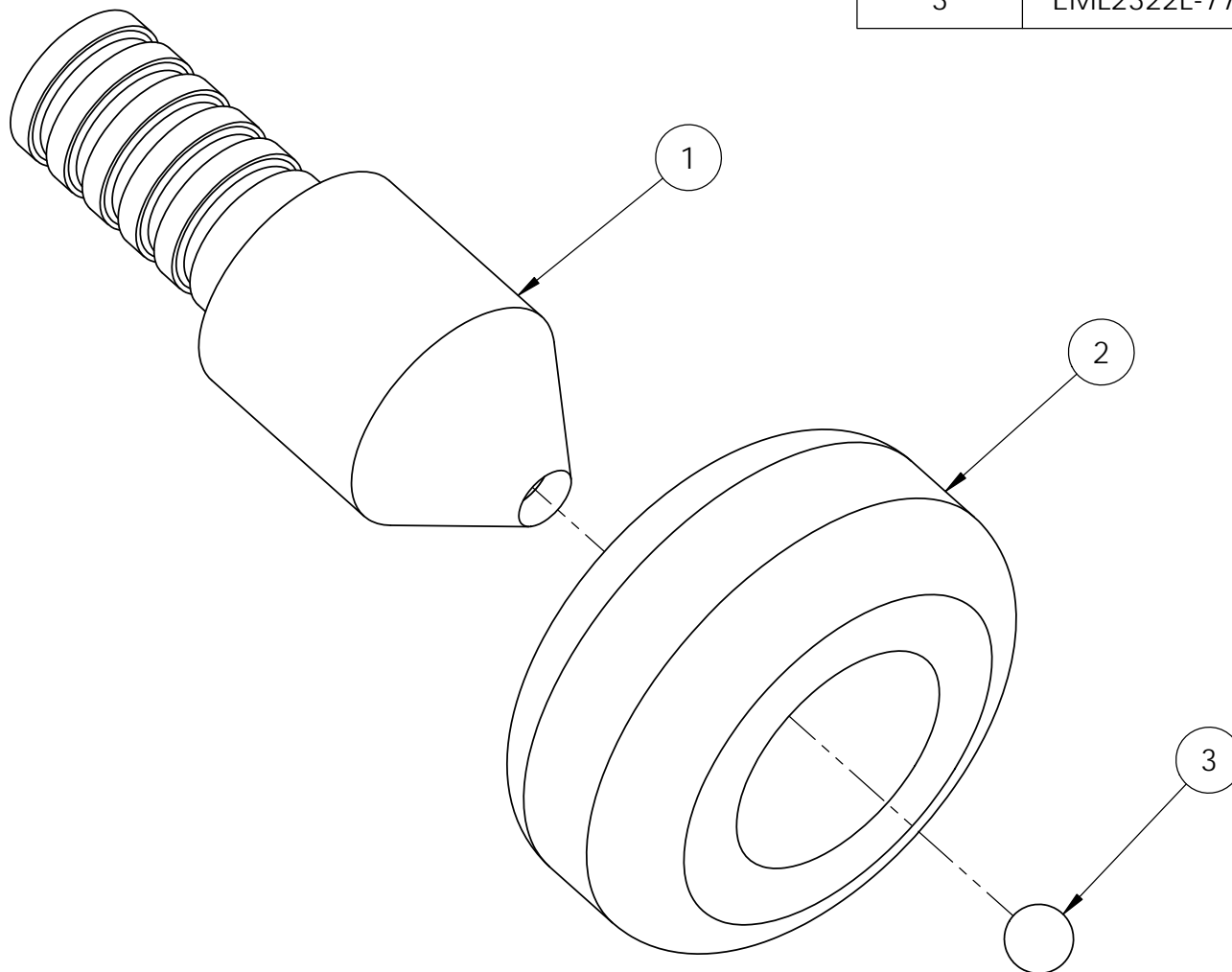


- NOTES:  
 1. DIMS IN INCHES  
 2. QTY: 1

TITLE:		Spinning Top Assembly		
DRAWN		DAVID TUYN		
DESIGNED		DAVID TUYN		
SIZE	DWG. NO.	REV		
<b>A</b>	EML2322L-A-000	<b>A</b>		
SCALE: 3:1		SHEET 2 OF 3		

DIMENSION TYPE	PLACES IN DIMENSION		
	0.0	0.00	0.000
LOCATIONAL	±0.050	±0.020	±0.005
ANGULAR	±5	±2	±0.5

ITEM NO.	PART NUMBER	DESCRIPTION	QTY.
1	EML2322L-777	Spinner Body	1
2	EML2322L-778	Spinner Mass	1
3	EML2322L-779	1/8" Ball Bearing	1



NOTES:  
 1. DIMS IN INCHES  
 2. QTY: 1

TITLE: Spinning Top Assembly

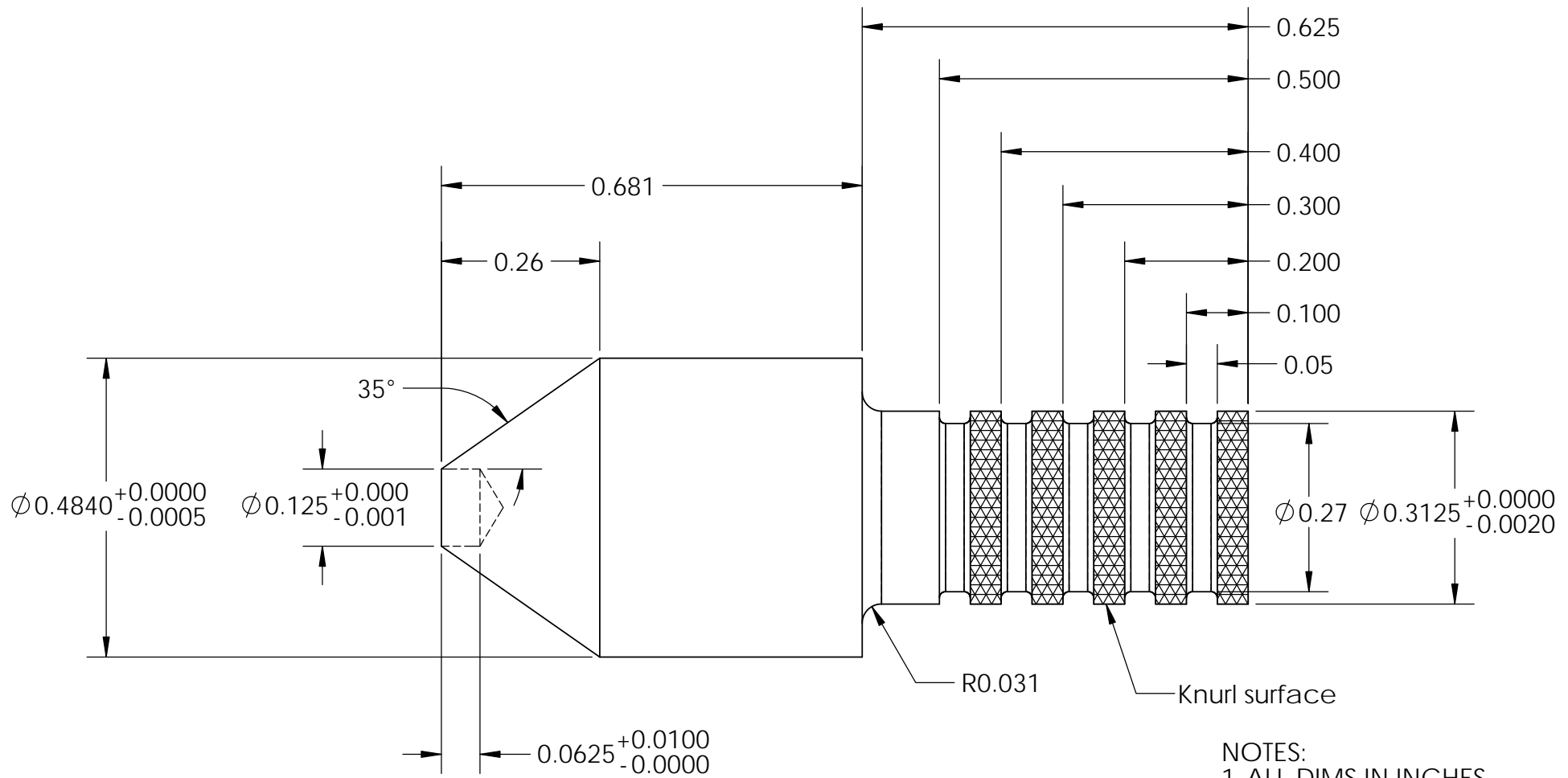
DRAWN DAVID TUYN

DESIGNED DAVID TUYN

DIMENSION TYPE	PLACES IN DIMENSION		
	0.0	0.00	0.000
LOCATIONAL	±0.050	±0.020	±0.005
ANGULAR	±5	±2	±0.5

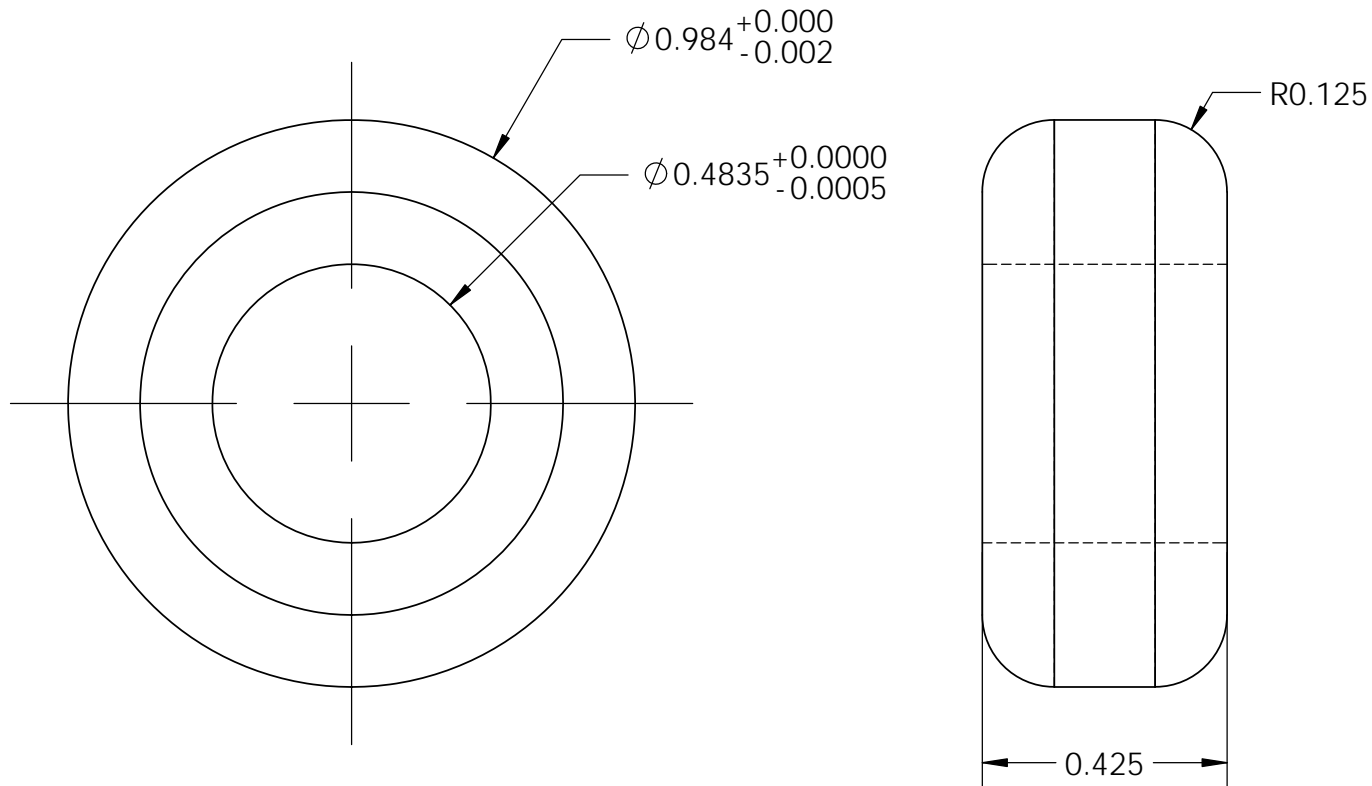
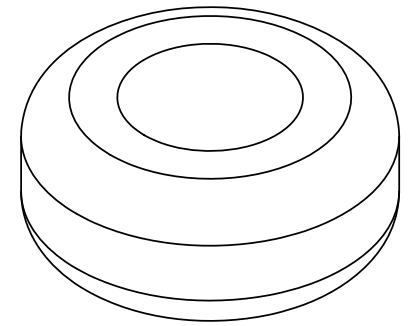
SIZE DWG. NO. REV  
**A** EML2322L-A-000 **A**

SCALE: 3:1 SHEET 3 OF 3



- NOTES:  
 1. ALL DIMS IN INCHES  
 2. MATL: 6061-T6  
 3. QTY: 1  
 4. FINISH ALL SURFACES  
 5. BREAK ALL EDGES

TOLERANCE UNLESS NOTED				TITLE: Spinner Body		
OPERATION	PLACES IN DIMENSION			DRAWN	DAVID TUYN	
	0.0	0.00	0.000		DESIGNED	DAVID TUYN
MACHINING	±0.050	±0.020	±0.005	SIZE	DWG. NO.	REV
CUT OFF (SAW, BURN, SHEAR)	±0.1	±0.060		<b>A</b>	EML2322L-777	<b>A</b>
WELDING	±0.1	±0.060				
ANGULAR DIMS	±5	±2	±0.5	SCALE: 4:1		SHEET 1 OF 1



- NOTES:  
 1. DIMS IN INCHES  
 2. MATL: BRASS  
 3. QTY: 1  
 4. FINISH ALL SURFACES  
 5. BREAK ALL EDGES

TOLERANCE UNLESS NOTED				TITLE: Spinner Mass		
OPERATION	PLACES IN DIMENSION			DRAWN	DAVID TUYN	
	0.0	0.00	0.000	DESIGNED	DAVID TUYN	
MACHINING	±0.050	±0.020	±0.005	SIZE	DWG. NO.	REV
CUT OFF (SAW, BURN, SHEAR)	±0.1	±0.060		<b>A</b>	EML2322L-778	<b>A</b>
WELDING	±0.1	±0.060				
ANGULAR DIMS	±5	±2	±0.5	SCALE: 3:1	SHEET 1 OF 1	